

Oracle Warehouse Management Cloud

Oracle Warehouse Management Enterprise Edition Cloud introduces a new paradigm in supply chain execution solutions: robust extended warehouse management at significantly lower total cost of ownership. Oracle Warehouse Management Enterprise Edition Cloud delivers innovative capabilities, mobile solutions, reporting capabilities and an easy to use browser interface. The solution is dynamic and easily configurable for rapid implementation that evolves with your business.

TOMORROW'S WAREHOUSE MANAGEMENT, TODAY

The Oracle Warehouse Management Enterprise Edition Cloud transforms warehouse and inventory management for the New Fulfillment Economy. The solution combines the speed and savings of the cloud with best-of-breed fulfillment functionality while giving companies a 360-degree view of their inventory without the high maintenance costs and upgrade trap of traditional solutions.

Today's modern warehouse managers aren't tied to a desk. They need access on the go to critical information in order to make smart decisions. With Oracle Warehouse Management Enterprise Edition Cloud, mobility is inherent, having been built-in from day one. Managers can view real-time analytics and reporting while users can perform all of the essential activities (pick, pack, load, ship/manifest support, kitting, de-kitting, etc.) to power best-in-class fulfillment operations.

Key Business Benefits

- Increase inventory visibility
- Reduce stock outs
- Increase labor productivity
- Improve customer satisfaction
- Improve space utilization
- Improve shipment accuracy
- Reduce fulfillment costs

Disclaimer: This document is for informational purposes. It is not a commitment to deliver any material, code, or functionality, and should not be relied upon in making purchasing decisions. The development, release, and timing of any features or functionality described in this document remains at the sole discretion of Oracle.

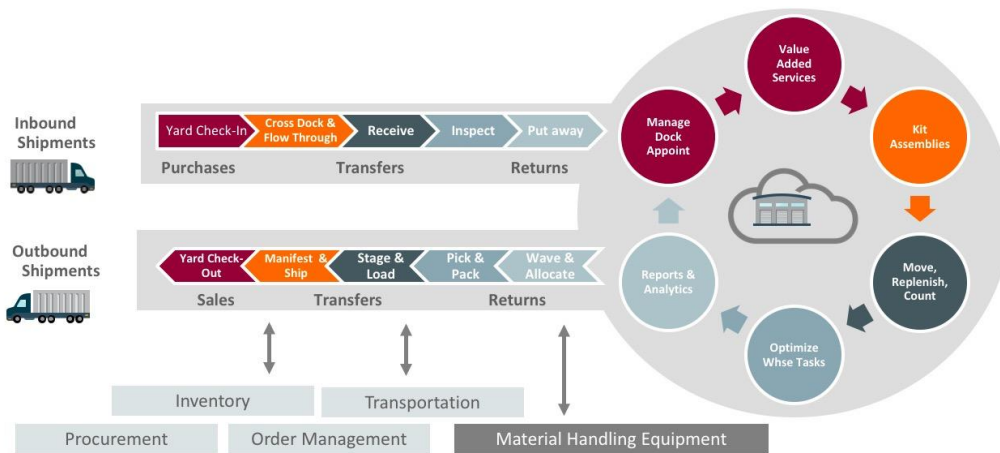


Figure 1 Support complete warehouse execution

Oracle Warehouse Management Enterprise Edition Cloud supports the following key warehousing business functions:

Dock Appointment Management – Improve dock efficiency by quickly and easily booking appointments for each facility and door. Appointments can be added directly into Oracle Warehouse Management Enterprise Edition Cloud or interfaced with external transportation solutions.

Receiving, Cross Docking, and Directed Putaway – Receive loads, cross-dock material needed for outbound shipments, and intelligently direct operators to putaway material to dynamic stock locations.

Reverse Logistics Management – A comprehensive set of capabilities to manage “end-to-end” reverse logistics process for retailers, manufacturers and third party reverse logistics providers.

Value Added Services (VAS) – Configure, create and perform custom VAS processes, such as custom labeling and tagging, other customer-specified service, anytime during the inventory life cycle.

Kitting and De-kitting – Postpone final assembly to distribution and create promotional bundles to push more volume with kitting. Release waves to pick components for kitting, and release waves of assemblies for de-kitting.

Tasking & Location Management – Optimize operations by determining the best activity for an employee to perform based on their role, the priority of the work to be done, and the physical proximity of a worker to the location.

Cycle Counting – Increase inventory accuracy with automated inventory counting task generation. Perform tasks concurrently with other warehouse operations.

Multi-Field Barcodes – Increase operational efficiencies by reducing the number of scans. Define both 1D and 2D multi-field barcodes, their application identifiers and the fields to process. Use one

Key Features

- Mobile User Interface support for barcode scanning with Wireless RF/Mobile Handhelds
- Inventory tracking with License Plate Numbers (LPNs)
- Dock appointment management
- Receiving, cross docking, and directed putaway
- Reverse logistics management
- Value Added Services (VAS)
- Kitting and de-kitting
- Tasking & location management
- Cycle counting
- Wave management allocation
- Replenishment management
- Diverse picking strategies and directed packing
- Route and shipment management
- Store distribution management

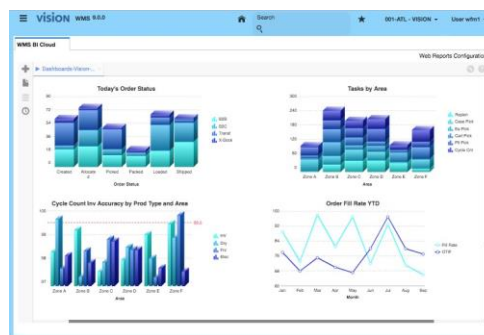


Figure 2 Warehouse Management Business Intelligence

barcode to perform operations such as receiving, putaway, replenishment, and picking, amongst others.

Wave Management Allocation – Improve pick efficiency and gain greater control of shipment planning via user-configurable wave allocation and release functionality. Improve facility throughput and overall warehouse operations.

Replenishment Management – Automatically manage stock levels within the warehouse and generate tasks based on minimum and maximum levels or based on requirements for planned waves.

Diverse Picking Strategies and Directed Packing – Improve the efficiency of picking operations by supporting more complex picking strategies. Intelligently direct operators to pack material into containers meeting weight, volume, and packaging requirements.

Route & Shipment Management – Organize your outbound staging and loading by creating shipping routes to manage the progress of loads and determine shipment accuracy.



Figure 3 Warehouse Management

Store Distribution Management Store

Distribution Management – Optimize store fulfillment with focused capabilities, including put-to-store management, cross docking, store-based waving, and task grouping by store.

Yard Management – Improve facility trailer flow-through by having full visibility and traceability of trailer arrival times, locations within the yard or docks, and all the times of moves from arrival to departure. Order processing times and demurrage charges can be reduced with this added management and visibility to both trailers and their contents in the yards outside the warehouse.

Related Products

Oracle Warehouse Management Enterprise Edition Cloud is a key component of Oracle's Supply Chain Management Cloud solutions that work together to provide Oracle customers with a broad array of capabilities:

- Oracle Warehouse Workforce Management Cloud
- Oracle Warehouse Management Automation Cloud
- Oracle Transportation Management Cloud
- Oracle Global Trade Management Cloud
- Oracle Order Management Cloud
- Oracle Inventory Management Cloud
- Oracle Purchasing Cloud

MODERN WAREHOUSE MANAGEMENT IN THE CLOUD

Oracle delivers the industry's broadest and deepest cloud-based warehouse management solution available on the market today. Oracle Warehouse Management Enterprise Edition Cloud empowers warehouses and distribution centers to adapt to business and market changes by leveraging ongoing technological innovation, while offering a centralized global view of inventory. This allows managers to view the movement of inventory and ascertain the status of all inbound activity, inventory on hand, and outbound shipments across all facilities in real time.

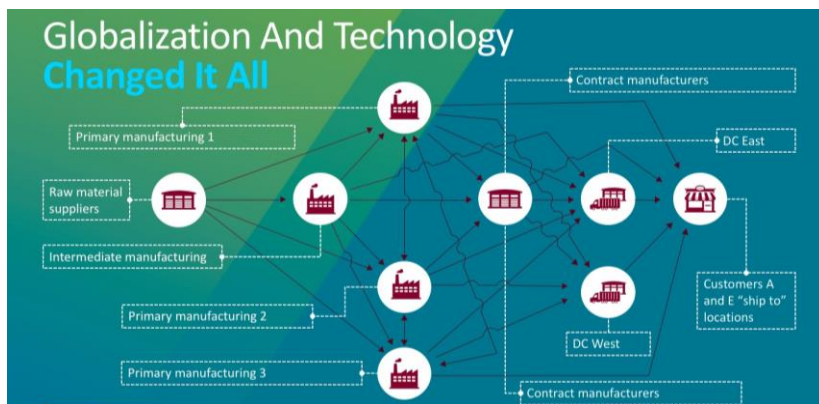


Figure 4. Warehouse Management for today's customer centric supply chain

The benefits of using Oracle Warehouse Management Enterprise Edition Cloud include:

- **Reduced Operating Costs** – System directed activities and task interleaving, combined with the elimination of paperwork and manual data entry, results in significant productivity gains in direct labor. Improved space utilization is also achieved allowing companies to optimize product storage using rules established for the facility. This results in better product organization yielding space savings.
- **Reduced Inventory Costs** – The solution provides real-time inventory visibility which eliminates lost product and reduce overstocks. It also eliminates the potential for making shipping mistakes by providing an accurate way to pick orders by scanning the barcodes and verifying the product being picked. This all translates into a lower cost per order, increased storage capacity within the center, reduced freight costs, and improved service levels results in overall reduced fulfillment costs.
- **Increased Revenues** – Improved customer satisfaction leads to brand loyalty and ultimately increased sales. Having the right product at the right time and place increases sales and allows companies to meet Service Level Agreements (SLAs) by reducing short ships, shipping errors, and missed deliveries.

MODERN, FLEXIBLE, STANDARDS-BASED ARCHITECTURE

Oracle Warehouse Management Enterprise Edition Cloud is built on a modern, web-based architecture that provides maximum flexibility and the lowest total cost of ownership. The functionality is accessible via standard, intuitive web browsers that enable companies to deploy across global organizations with minimal effort, training costs and fully supports service-oriented architecture (SOA) for maximum business process flexibility.

The application is highly flexible and utilizes open standards (known as REST APIs) that make it easy to integrate Oracle Warehouse Management Enterprise Edition Cloud with other systems or build extensions to Oracle Warehouse Management Enterprise Edition Cloud effortlessly and with minimal development skills. This allows you to build custom applications on your own timelines. This approach to creating extensions is more robust and will not break when new product updates are delivered.

The solution has a flexible architecture that enables companies to start small and expand as necessary to support growth in users, transaction volume and business processes while maintaining high performance service levels.

CONNECT WITH US

Call +1.800.ORACLE1 or visit oracle.com.

Outside North America, find your local office at oracle.com/contact.

 blogs.oracle.com/oracle

 facebook.com/oracle

 twitter.com/oracle

Integrated Cloud Applications & Platform Services

Copyright © 2018, Oracle and/or its affiliates. All rights reserved. This document is provided for information purposes only, and the contents hereof are subject to change without notice. This document is not warranted to be error-free, nor subject to any other warranties or conditions, whether expressed orally or implied in law, including implied warranties and conditions of merchantability or fitness for a particular purpose. We specifically disclaim any liability with respect to this document, and no contractual obligations are formed either directly or indirectly by this document. This document may not be reproduced or transmitted in any form or by any means, electronic or mechanical, for any purpose, without our prior written permission.

This device has not been authorized as required by the rules of the Federal Communications Commission. This device is not, and may not be, offered for sale or lease, or sold or leased, until authorization is obtained.

Oracle and Java are registered trademarks of Oracle and/or its affiliates. Other names may be trademarks of their respective owners.

Intel and Intel Xeon are trademarks or registered trademarks of Intel Corporation. All SPARC trademarks are used under license and are trademarks or registered trademarks of SPARC International, Inc. AMD, Opteron, the AMD logo, and the AMD Opteron logo are trademarks or registered trademarks of Advanced Micro Devices. UNIX is a registered trademark of The Open Group. 1018