

Oracle Internet of Things Connected Worker Cloud



The Oracle IoT Connected Worker Cloud is a SaaS solution that can help to boost worker safety, comply better with work safety regulations, and improve worker efficiency by providing real-time visibility into worker status, location, and work environment. It targets companies in the high environmental risk industries, such as the mining industry, engineering and construction industries. With margins for products eroding and customer demands increasing, firms must adopt modern best practices to increase business agility, enable insightful decision-making, and achieve more, with fewer resources. Built on a modern cloud & mobile platform, this solution provides firms with - it can transform your business.

EFFICIENTLY AND SAFELY MANAGE YOUR WORKERS - IN THE CLOUD

KEY BUSINESS BENEFITS

- Increase worker health, site safety, and regulatory compliance
- Mitigate incidents by using deep insights into past incidents and contributing factors
- Improve operation efficiency by leveraging location based analytics

ORACLE CONNECTED WORKER CLOUD

The Oracle Connected Worker Cloud is designed to achieve safety and operational excellence in the mining industry, engineering and construction industries. It enables these industries to boost worker health & safety, comply with health & safety regulations, manage holistically with descriptive analytics, and integrates with HCM and Project Management.

Boost Worker Health & Safety

The Oracle Connected Worker Cloud provides real-time visibility into work environments at a worksite manager's fingertips. By monitoring in real-time, the location of workers can be continuously monitored. In the event of an accident or emergency, the supervisor can broadcast a message to select or all workers, ensuring that the right workers receive accurate instructions to either. Location based analytics provide valuable situational awareness and enables organizations to reduce the time to muster. The Connected Worker also support both auto-generated and user-definable rules, so that the health and safety of workers can be automated. For example, a rule can be written to detect if a workers has not moved in 5 minutes, indicating the she might have passed out.

Safe Harbor Statement

The following is intended to outline our general product direction. It is intended for information purposes only, and may not be incorporated into any contract. It is not a commitment to deliver any material, code, or functionality, and should not be relied upon in making purchasing decisions. The development, release, and timing of any features or functionality described for Oracle's products remains at the sole discretion of Oracle.

KEY FEATURES

- Track all workers and manage in real-time, with location tracking, movement monitoring, and geo-fencing
- Broadcast to select or all workers with real-time & accurate instructions
- Rules creation, either auto or custom, to match business conditions & needs
- Analytics to track patterns and improve worker health & safety

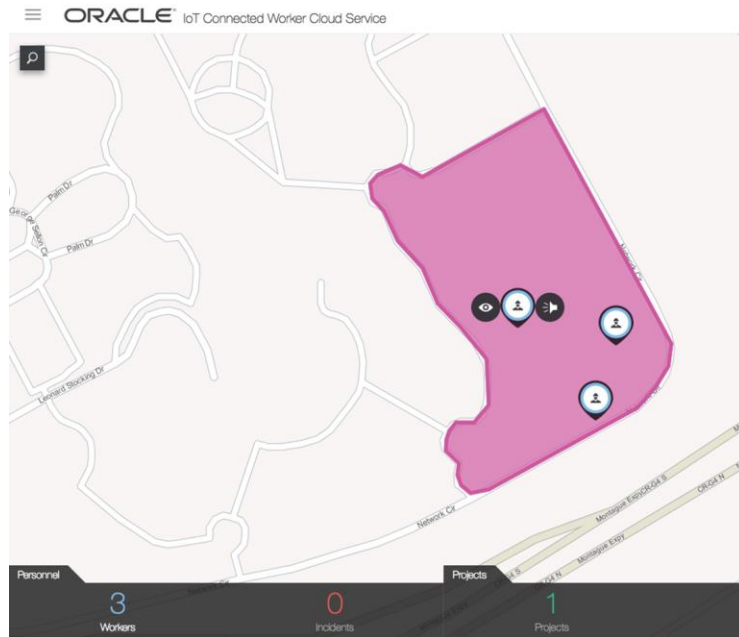
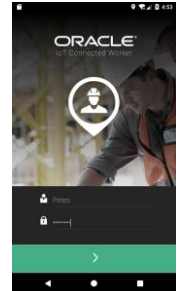


Figure 1. Connected Worker displays location, the number of workers, and provides the ability to broadcast messages to the workers to deliver accurate and real-time information, as well as looking up pertinent information about the worker.

Better Compliance

The Oracle Connected Worker Cloud improves regulatory and adherence through accident prevention. Environmental and working conditions can be constantly monitored for unsafe conditions for workers. Policy driven compliance can track real-time working conditions, the workers readiness to be in such conditions, and either trigger a notification or disallow access. Worker readiness can be looked up to ensure either training, experience, or guidance is in compliance with the policy. Track and report effectiveness of safety procedures. And in the case that an incidence does occur, the proper procedure is followed via incidence management.



Safe Harbor Statement

The following is intended to outline our general product direction. It is intended for information purposes only, and may not be incorporated into any contract. It is not a commitment to deliver any material, code, or functionality, and should not be relied upon in making purchasing decisions. The development, release, and timing of any features or functionality described for Oracle's products remains at the sole discretion of Oracle.

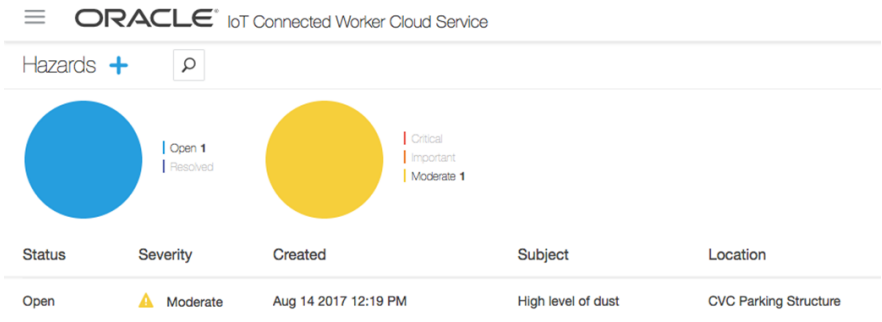


Figure 2. Marking an area as hazard (high level of dust) to ensure the health rules & regulations are not violated.

KEY BENEFITS

- **Boost Worker Health & Safety** Track all workers and manage in real-time, with location tracking, movement monitoring, and geo-fencing
- **Better Compliance** Broadcast to select or all workers with real-time & accurate instructions
- **Improve Operational Effectiveness** Analyze location, length of time, project, number of incidence, rule & policy violation to reduce cost and improve efficiency
- **Integration with HCM & Project Management** Harness real-time data to manage human capital and greatly increase confidence in projects

Intelligent Analytics

Operational effective, worker health & safety, and compliance can be track, analyzed, and enforced through diagnostics analytics. All facets of worker information is tracked – location, length of time, project assigned to, number of incidents, rule & policy violation. Managers can correlate accident data with the noise level, presence of radiation, toxic gas level, and the temperature of a specific location. The helps managers perform root cause analysis to identify whether accident was due to environmental conditions, worker’s overconfidence/laziness. These insights help companies to give workers more incentive to practice proper safety measures within the workplace.

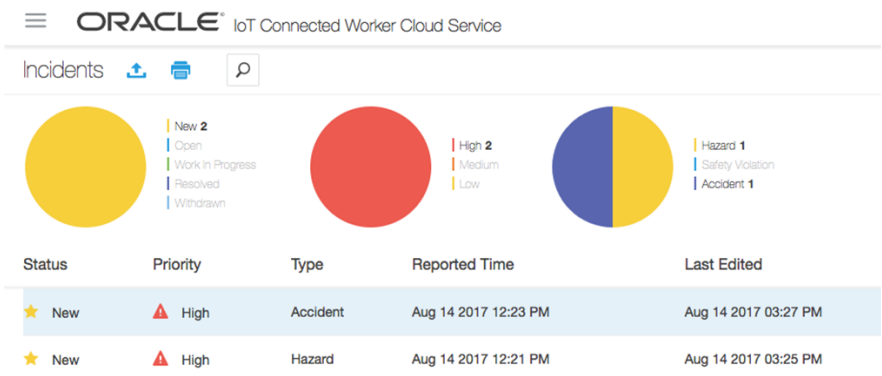


Figure 3: Analytics on incidents, such as status, severity, and types can be easily analyzed to prevent future incidents.

Safe Harbor Statement

The following is intended to outline our general product direction. It is intended for information purposes only, and may not be incorporated into any contract. It is not a commitment to deliver any material, code, or functionality, and should not be relied upon in making purchasing decisions. The development, release, and timing of any features or functionality described for Oracle’s products remains at the sole discretion of Oracle.

Oracle HCM and Project Management Integration

Oracle Connected Worker Cloud can easily integrated with other Oracle Cloud apps to multiple the value gained through worker tracking. When connected to Oracle Human Capital Management (HCM) Cloud, worker with the requisite training is looked up in the system – hence improving worker health, safety, and improving operational efficiency. When connected to Oracle Prime Projects Cloud Service, Oracle Connected Worker Cloud can provides real time visibility into project information with an integrated project scope, schedule, cost, resource, risk and performance information. Project managers and stakeholders can make right decision based on in-built analysis, dashboard and reporting tools.

RELATED SOLUTIONS

Oracle HCM Cloud provides a complete view of workers, including training, experience, policy, and rule compliance





Oracle Prime Projects Cloud Service allows users to manage scope, schedule, cost, resource and risk information of a project



CONTACT US

For more information about Manufacturing Cloud, visit oracle.com or call +1.800.ORACLE1 to speak to an Oracle representative.

CONNECT WITH US

-  blogs.oracle.com/oracle
-  facebook.com/oracle
-  twitter.com/oracle
-  oracle.com

Integrated Cloud Applications & Platform Services

Copyright © 2019, Oracle and/or its affiliates. All rights reserved. This document is provided for information purposes only, and the contents hereof are subject to change without notice. This document is not warranted to be error-free, nor subject to any other warranties or conditions, whether expressed orally or implied in law, including implied warranties and conditions of merchantability or fitness for a particular purpose. We specifically disclaim any liability with respect to this document, and no contractual obligations are formed either directly or indirectly by this document. This document may not be reproduced or transmitted in any form or by any means, electronic or mechanical, for any purpose, without our prior written permission.

Oracle and Java are registered trademarks of Oracle and/or its affiliates. Other names may be trademarks of their respective owners.

Intel and Intel Xeon are trademarks or registered trademarks of Intel Corporation. All SPARC trademarks are used under license and are trademarks or registered trademarks of SPARC International, Inc. AMD, Opteron, the AMD logo, and the AMD Opteron logo are trademarks or registered trademarks of Advanced Micro Devices. UNIX is a registered trademark of The Open Group.



Oracle is committed to developing practices and products that help protect the environment